



CHASE APARTMENTS  
LONDON



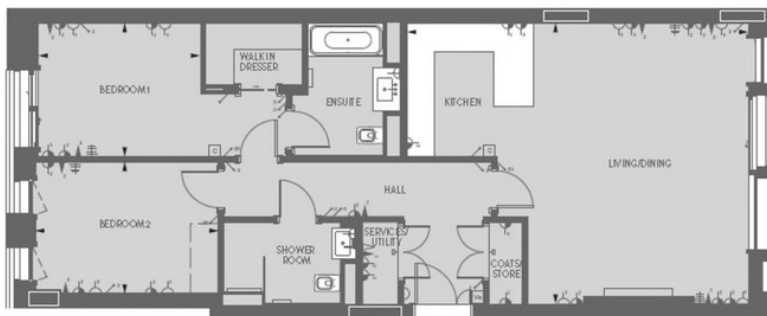
Gladstone House , 190 Strand, Covent Garden WC2R 1AB

£2,500,000

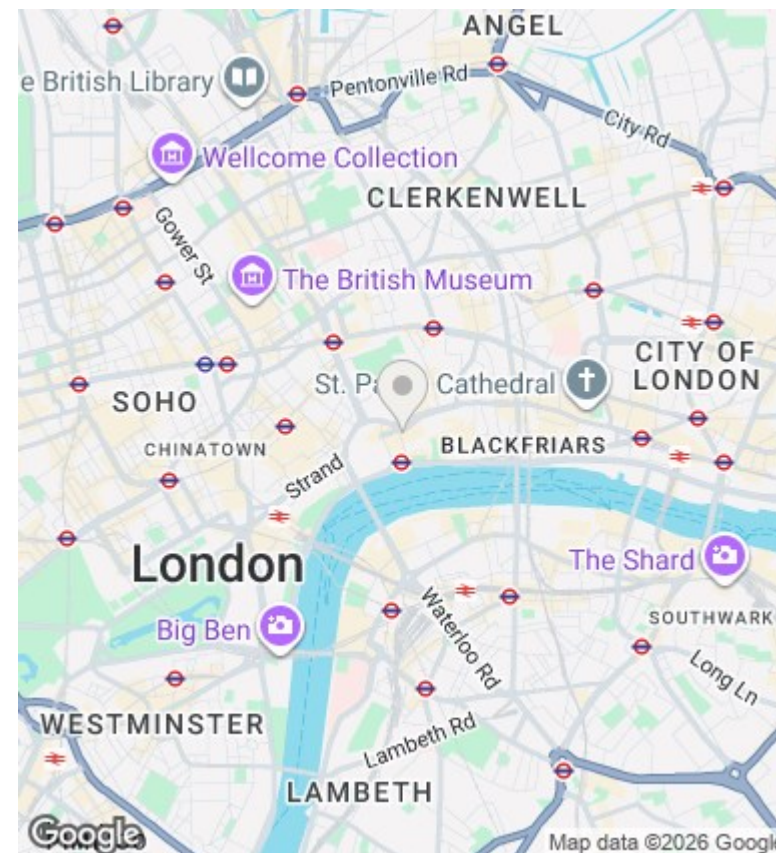
- 24/7 concierge
- air cooling
- cinema
- dual aspect
- gym and spa
- virtual golf course
- under floor heating
- swimming pool
- minutes away from Temple tube station

Grosvenor Waterside, 32 Gatliff Road, Belgravia, London, SW1W 8QN  
02077225022

<http://www.chaseapartments.com/>



Living/Dining/Kitchen	20' 10" x 25' 4"	6350 mm x 7720 mm
Bedroom 1	9' 11" x 12' 0"	3015 mm x 3660 mm
Bedroom 2	9' 9" x 13' 7"	2970 mm x 4135 mm
Total area	1087 sq ft	101 sq m



## Viewings

Viewings by arrangement only.  
Call 02077225022 to make an appointment.

## Council Tax Band

B

## EPC Rating:

Energy Efficiency Rating		
	Current	Potential
Very energy efficient - lower running costs		
(92-plus) <b>A</b>		
(81-91) <b>B</b>		
(69-80) <b>C</b>		
(55-68) <b>D</b>		
(39-54) <b>E</b>		
(21-38) <b>F</b>		
(1-20) <b>G</b>		
Not energy efficient - higher running costs		
<b>England &amp; Wales</b>	EU Directive 2002/91/EC	